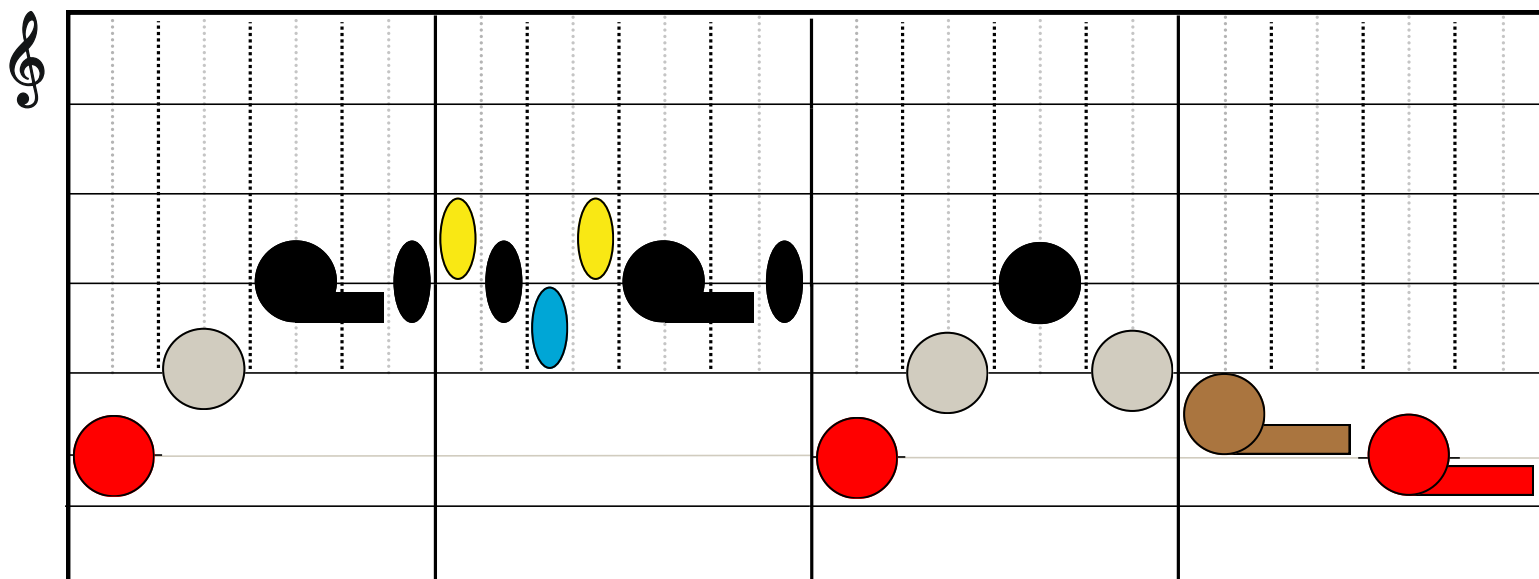
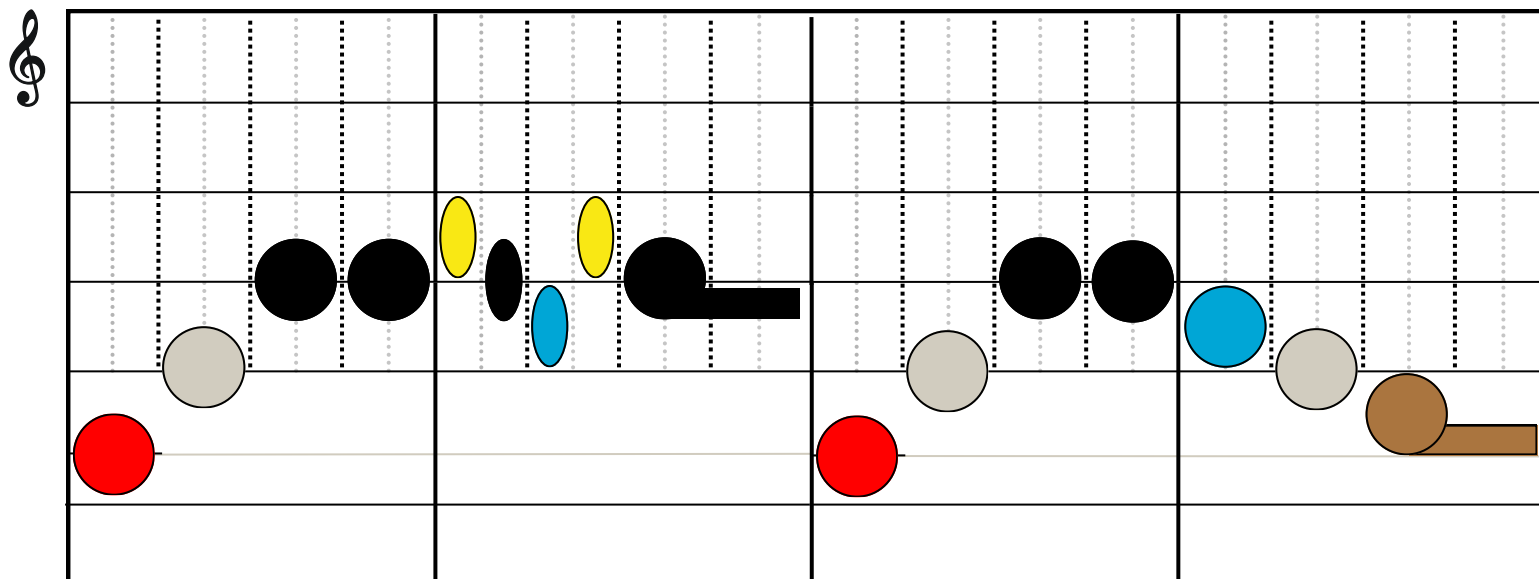
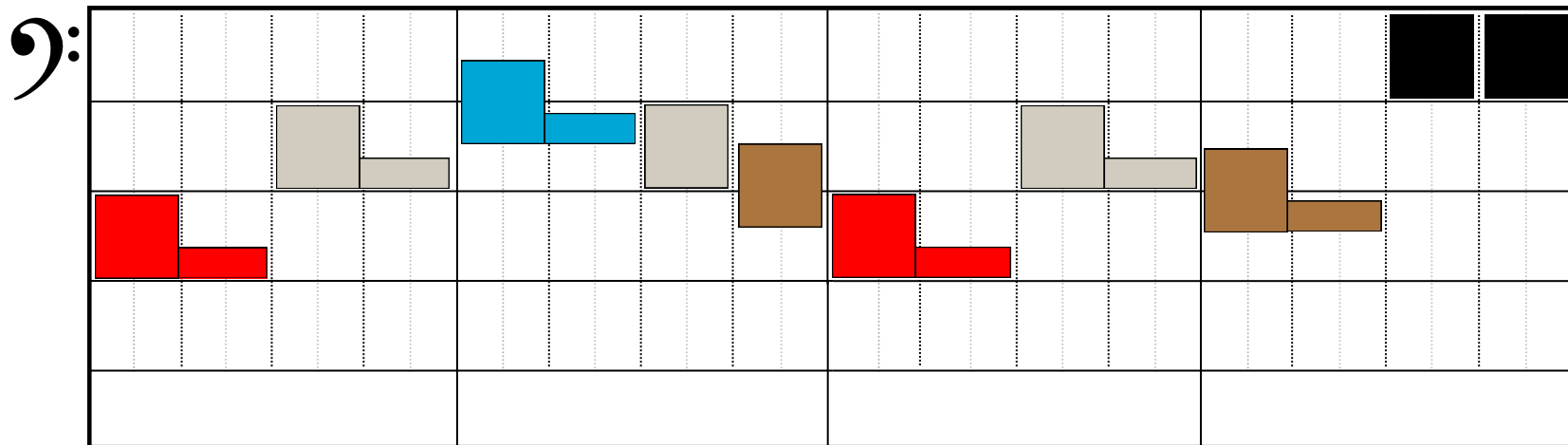
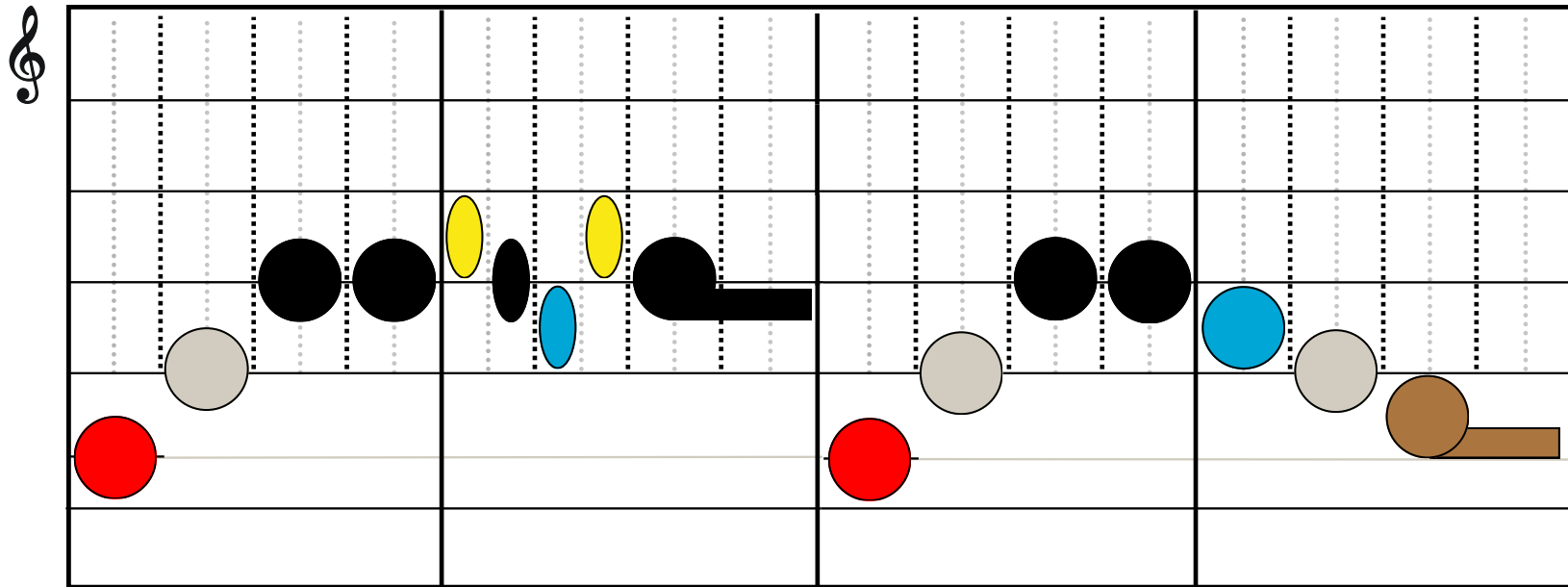


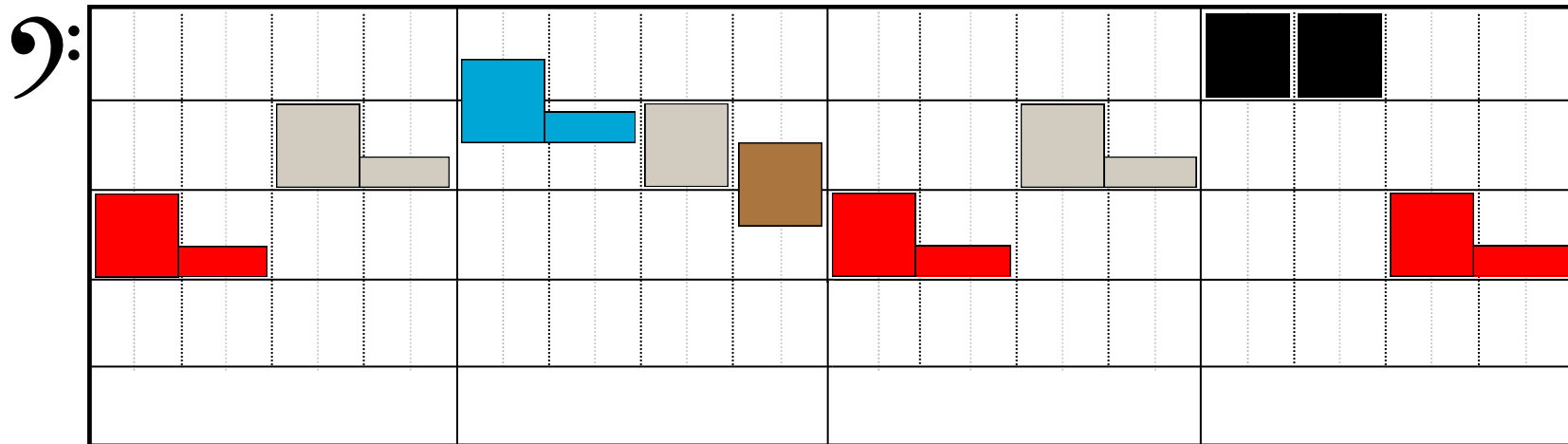
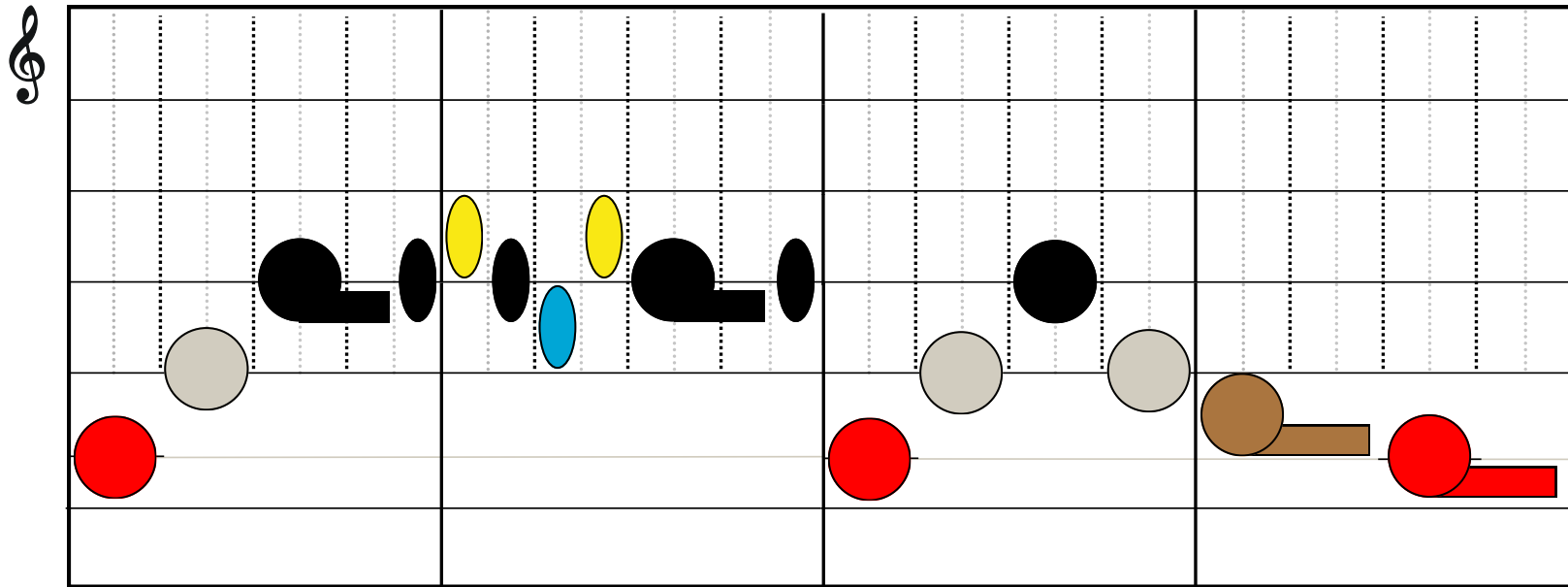
Ally Bally - Melody



Ally Bally - Melody & Bass



Ally Bally - Melody & Bass



Ally Bally

Musical staff with treble clef and four measures of music notation. The notation uses circles and beams to represent notes and rests. Measure 1: Red circle on the first line, grey circle on the second line, black circle on the third line, black circle on the third line. Measure 2: Yellow oval on the second line, black oval on the second line, blue oval on the second line, black circle on the third line with a horizontal beam extending to the right. Measure 3: Red circle on the first line, grey circle on the second line, black circle on the third line, black circle on the third line. Measure 4: Blue circle on the second line, grey circle on the second line, brown circle on the third line with a horizontal beam extending to the right.

Musical staff with treble clef and four measures of music notation. The notation uses horizontal bars of various colors to represent notes and rests. Measure 1: Black bar on the second line, grey bar on the second line, red bar on the first line. Measure 2: Red bar on the first line, yellow bar on the second line, black bar on the second line, blue bar on the second line, grey bar on the second line. Measure 3: Black bar on the second line, yellow bar on the second line, blue bar on the second line, red bar on the first line. Measure 4: Brown bar on the third line, red bar on the first line, green bar on the second line, black bar on the second line, blue bar on the second line, red bar on the first line.

Musical staff with bass clef and four measures of music notation. The notation uses horizontal bars of various colors to represent notes and rests. Measure 1: Red bar on the first line, red bar on the first line, grey bar on the second line, grey bar on the second line. Measure 2: Blue bar on the second line, blue bar on the second line, grey bar on the second line, brown bar on the second line. Measure 3: Red bar on the first line, red bar on the first line, grey bar on the second line, grey bar on the second line, brown bar on the second line. Measure 4: Black bar on the third line, black bar on the third line, brown bar on the second line, brown bar on the second line.

Ally Bally

